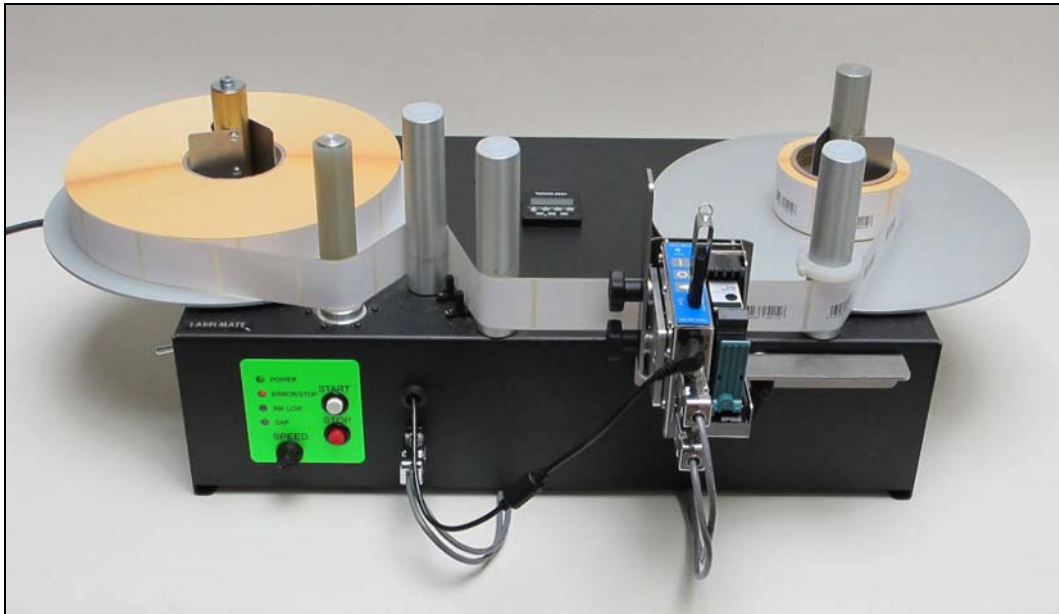


p - 300

Reel-to-Reel Inkjet Label Printer



P-300

The new Labelmate **P-300 Reel-to-Reel Inkjet Label Printer** is a combination of the well-known **PM-300** Printer Mechanism and the Micron Controller. The system uses the reliable HP TIJ 2.5 technology.

The system is capable of printing a roll of labels of 30cm diameter, in less than 5 minutes with a resolution of 300x150 DPI, this with a negligible cost of the consumable (ink).

Not only, can the **P-300** print labels with messages of maximum 12,7mm height, **but the P-300 is the ideal machine for adding variable data to pre-printed labels, at low cost and high speed.**

The print files are generated on a standard computer using the supplied software and are transferred to the controller via an USB key.

The **P-300** uses a standard HP inkjet cartridge. It will print texts, graphics, barcodes, variable counter and dates at speeds up to 130cm/sec. at 300DPI and up to 235cm/sec. at 150DPI. The print height is 12.7mm. The printhead can be placed to print anywhere on a label of up to 100mm by 140mm.

The extremely low-cost of the consumable, makes the machine very economical and ecological.

A large variety of ink types, readily available on the market, allow choosing the best cartridge for a specific job.

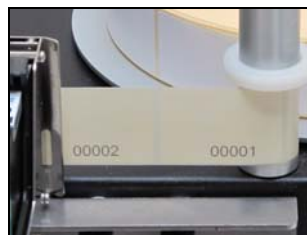
P-300 REEL-TO-REEL INKJET LABEL PRINTER

PRINTHEAD CAPABILITIES:


- Text graphics, barcodes, variable counter and dates.
- Fully UNICODE compatible layout software.
- Counter and dates with digits in roman, arab, farsi or user defined characters.
- Low ink alarm with user-definable level.
- Print height 12,7mm (1/2”).
- User-definable resolution: 300x300 DPI, 300x150 DPI, 150x150 DPI, 150x75 DPI and 75x75 DPI.
- Separation between design and operation. Nothing in the layout can be destroyed by the operator.
- Spit function to keep fast drying inks open.
- Purge function can be activated remotely using digital input.

HARDWARE SPECIFICATIONS:

- Maximum roll diameter: 300mm.
- Maximum label width: 130mm.
- Maximum label roll weight: 7Kg.
- Maximum speed:
 - P-300-LS: 158cm/sec.
 - P-300-HS: 235cm/sec.
- Rewind “out” or “in”.
- Standard unwind and rewind core holders: 76mm (other sizes optional).
- Power: 220V – 50Hz (115V optional).
- With the proper ink and paper, the P-300 can also print on the backing paper.



Designed for all-day, every-day use, the **P-300 Reel-to-Reel Inkjet Label Printer** is backed by LABELMATE's famous 3-Year Parts and Labor Limited Warranty, assuring you trouble-free performance.


AIS
AUTO I.D. SYSTEMS LTD
30 Paradise Lane, Formby, Merseyside, L37 7EJ

Email: Info@auto-id-systems.co.uk

www.auto-id-systems.co.uk

CALL : 01704 876241
FAX : 01704 832321

