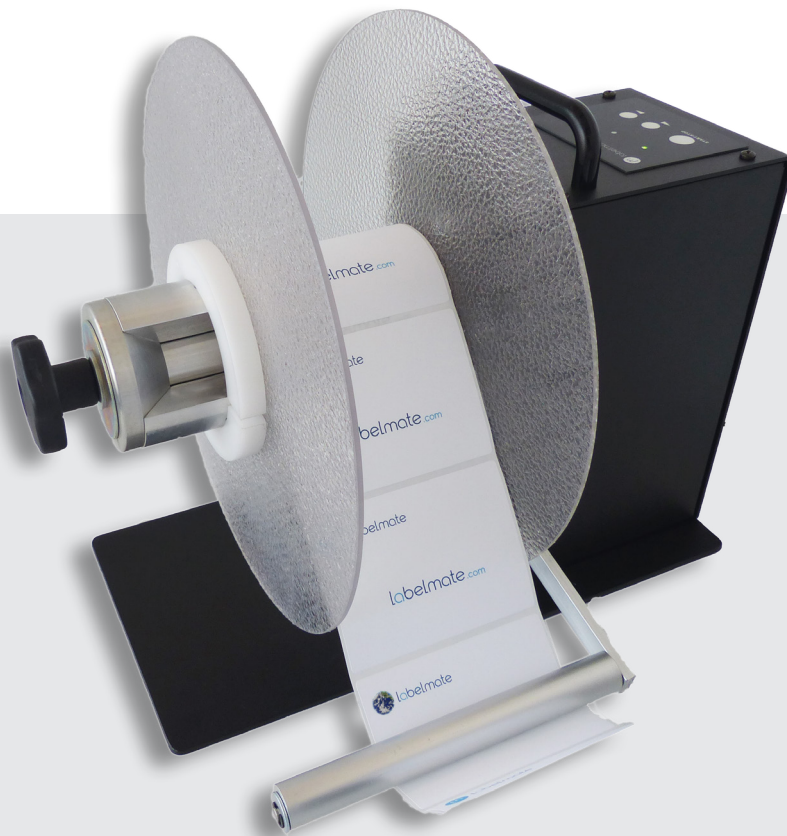




# labelmate

THE WORLD'S LEADING MANUFACTURER OF LABEL DISPENSERS,  
REWINDERS, UNWINDERS, SLITTERS & COUNTING SOLUTIONS



UNI-CAT

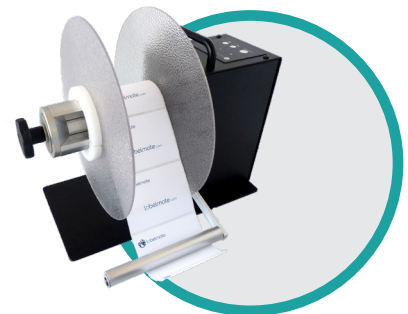
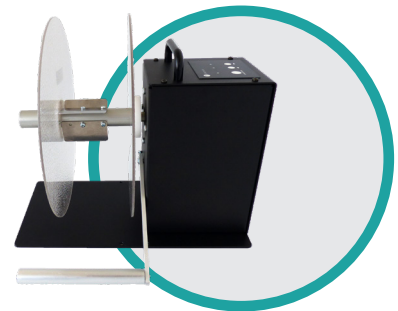
labelmate.com

# Uni-Cat

## UNIVERSAL & INTELLIGENT UNI-CAT

The new UNI-CAT is the smartest and most “UNI-VERSATILE” rewinder/unwinder in the Labelmate product range ! With various core sizes, label widths, roll diameters and options to choose from, there is a rewinder/unwinder to fit any job you may have. The new UNI-CAT replaces all CAT-3-TA models (with Tension Arm) and CAT-4 models.

- ✓ Self-teaching to work as rewinder or unwinder
- ✓ Supports back-feed process for colour inkjet & tension sensitive printers
- ✓ Auto-Speed Adjustment to align with printer speed
- ✓ Speed up to 125cm/sec to work with the fastest bar-code printers available
- ✓ Bi-Directional for internal & external winding
- ✓ New maintenance free, soft-touch control panel with LED-Status-Indicators

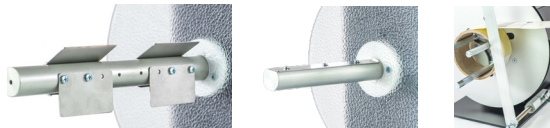


## FEATURES

- Seamlessly detecting & following printer activity: rewinding, idle and unwinding
- UNI-CAT-3-Standard has a Vane-style core Holder
- UNI-CAT-3-ACH employs an adjustable core holder enabling the use of varying core sizes, for maximum flexibility
- UNI-CAT-3-CHUCK includes a quick-locking “Quick-Chuck” permitting the fastest loading and unloading of cores and label rolls
- CHUCK/STANDARD/10-INCHES models come standard for using cores in 76mm. On request available in 38/40/44/70/100 mm. See product catalogue for configuration
- STANDARD/1-INCH/10-INCHES models come standard with inner & outer flanges. For the CHUCK models, the outer flange is optional.
- We recommend to add optional APG-CAT to the ACH and CHUCK models with other diameter than 76mm
- The NEW UNI-CAT is a perfect companion for colour inkjet printers. However, for applications where tight finished rolls are mandatory (e.g. if labels will be used in automatic applicator), we strongly recommend the ZCAT rewinders

## UNI-CAT-MODELS

P/N	MODEL	DESCRIPTION	MAX LABEL WIDTH	MAX ROLL DIAM	MAX WEIGHT
LMR042	UNI-CAT-STANDARD	Incl Inner & Outer Flange. Standard for 76mm cores (38/40/44/70/100mm available)	155 mm	300 mm	8 KG
LMR043	UNI-CAT-ACH	Adjustable Core Holder for using any core diameter between 25 & 101 mm.	155 mm	280 mm	7 KG
LMR044	UNI-CAT-CHUCK	Incl Inner & Outer Flange. Easy-Loading Quick-Chuck for 76mm cores (38/40/44/70/100mm available)	170 mm (optional 220 & 270)	300 mm	10 KG
LMR045	UNI-CAT-10-INCHES	Standard for 76mm cores (38/40/44/70/100mm available)	255 mm	300 mm	10 KG
LMR046	UNI-CAT-1-INCH	For 25,4mm cores	155 mm	220 mm	8 KG



## UNI-CAT-OPTIONS

P/N	MODEL	DESCRIPTION
LMX444	APG-CAT	Adjustable Paper Guide, Guides the outer edge of the label web to ensure an even roll edge.
LMX508	FLANGE-CH-EXT	Optional External flange for UNI-CAT-CHUCK for 76mm cores
LMX489	FLANGE-CAT-INT	Spare Internal flange. Diam. 300 mm for CAT-ST & 10-INCHES
LMX490	FLANGE CAT-EXT	Spare External flange. Diam. 300 mm for CAT-ST & 10-INCHES
LMX491	STANDARD SHAFT	Standard shaft with vanes, internal and external flanges
LMX492	10" SHAFT	10-Inches shaft with vanes, internal and external flanges.
LMX500	ACH-CAT	Adjustable Core Holder for any core size from 25 to 101mm.
LMX501	BAIL STD	For rewind on shaft. No core is needed.
LMX502	BAIL 10"	For rewind on 10-inches shaft. No core is needed
LMX546	1' SHAFT	1 Inch shaft with vanes, internal and external flanges

## DIMENSIONS

- UNI-CAT-STANDARD: W x D x H:300 x 350 x 320 mm
- UNI-CAT-CHUCK: W x D x H:300 x 385 x 320 mm
- UNI-CAT-ACH: W x D x H:280 x 310 x 310 mm
- UNI-CAT-10-INCHES: W x D x H:300 x 455 x 320 mm
- UNI-CAT-1-INCH: W x D x H:220 x 350 x 280 mm
- Shipping Weight: Circa 14 KG, depending precise configuration

## GENERAL

- Power Supply: 220-240V- 50Hz DC, Output 15V-4,33A
- Limited Warranty of 5 Years, 1 Year on the Power Supply



Your local partner:

**+32 2 375 69 60**

**brussels@labelmate.com**

Chaussée de Ruisbroek 290  
1620 Drogenbos (Belgium)

**[www.labelmate.com](http://www.labelmate.com)**